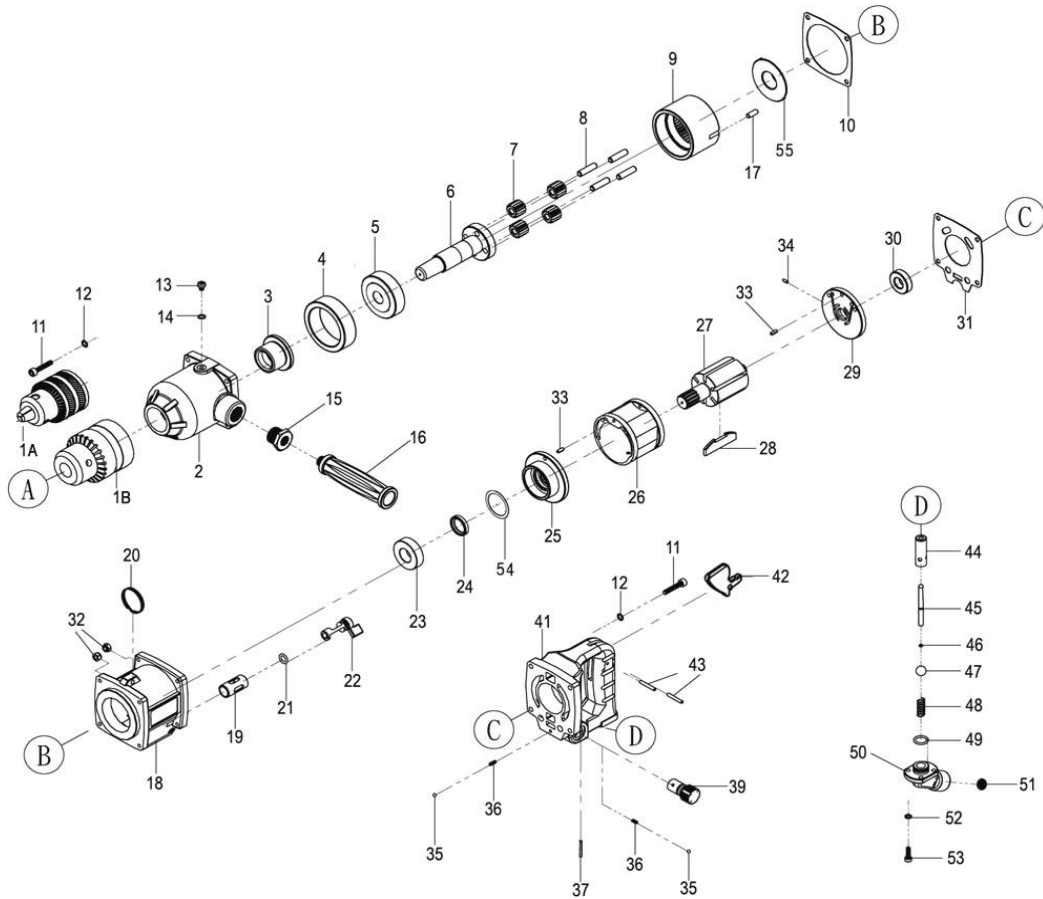


# C62244

5/8" AIR REVERSIBLE DRILL (SIDE EXHAUST)

3/4" AIR REVERSIBLE DRILL (SIDE EXHAUST)



## PARTS LIST

No.	Parts No.	Description	Q'ty
1	c62244-01A	5/8" (16mm) Chuck [ST-c62244]	1
	c62244-01B	3/4" (19mm) Chuck [ST-c62244-6]	1
2	c62244-02	Front Cap	1
3	c62244-03	Bushing	1
4	c62244-04	Bushing	1
5	c62244-05	Ball Bearing (6305)	1
6	c62244-06	Driving Rod [Incl. 8(4)]	1
7	c62244-07	Gear	4
9	c62244-09	Gear Ring	1
10	c62244-10	Packing	1
11	c62244-11	Screw	8
12	c62244-12	Washer	8
13	c62244-13	Screw	1
14	c62244-14	Washer	1
15	c62244-15	Bolt	1
16	c62244-16	Handle	1
17	c62244-17	Pin (Φ6x15.8)	1
18	c62244-18	Handle	1
19	c62244-19	Bushing	1
20	c62244-20	Hook	1
21	c62244-21	O-Ring (P2x1.5)	1
22	c62244-22	Reverse Valve	1
25	c62244-25	Front Plate Ass'y [Incl. 23, 24]	1
26	c62244-26	Cylinder	1
27	c62244-27	Rotor	1
28	c62244-28	Rotor Blade	6

No.	Parts No.	Description	Q'ty
29	c62244-29	Rear Plate	1
30	c62244-30	Ball Bearing (6002)	1
31	c62244-31	Packing	1
32	c62244-32	Bolt	8
33	c62244-33	Pin (Φ4x10)	2
34	c62244-34	Pin (Φ3x8)	1
35	c62244-35	Steel Ball (Φ4mm)	2
36	c62244-36	Spring	2
37	c62244-37	Pin (Φ3x26)	1
39	c62244-39	Speed Switch	1
41	c62244-41	Handle	1
42	c62244-42	Switch Lever	1
43	c62244-43	Pin (Φ4x26)	2
44	c62244-44	Bushing	1
45	c62244-45	Valve Rod	1
46	c62244-46	O-Ring (P9.2x2.5)	1
47	c62244-47	Plastic Ball (Φ12.7)	1
48	c62244-48	Spring	1
49	c62244-49	O-Ring (P14x2.4)	1
50	c62244-50A	Air Inlet (PT19)	1
	c62244-50B	Air Inlet (NPT18)	1
51	c62244-51	Filter	1
52	c62244-52	Washer	4
53	c62244-53	Screw	4
54	c62244-54	O-Ring (P37.82x1.78)	1
55	c62244-55	Washer	1